

Contact: Tony Secilia  
Motion Picture Set Communications  
Phone 626-398-0719  
Fax 626-398-9719  
[tony@directorpatch.com](mailto:tony@directorpatch.com)

173 Wapello Street  
Altadena, CA 91001  
Phone 866-482-7388  
Cell 626-483-9619  
[www.directorpatch.com](http://www.directorpatch.com)



# Press Release

## **SETCOMM's Software Driven Radio Communications Tool: "Director-Patch®" A unique Set organization Tool for the Motion Picture Industry, and beyond**

Two Way Radio Communications integrated with scripts, offering a very efficient method of Set Direction and Choreography, extremely beneficial for allowing Director's, First AD's and PA's complete control of Personnel and Effects, literally at the touch of a Button!

**Pasadena, Ca. December 7, 2005:** Motion Picture Set Communications (SETCOMM) of Pasadena, California develops Software Driven Communications Tools for Two Way Radio. These Tools offer a visual, Named, Multiple Push-Button Display of Personnel, and Departments, organized by Scenes or Scripts. On a Set or Location, a Director operates the Software from a Portable or Hand Held PC, and wears the familiar Headset with Microphone. A Calculator type Button array lists multiple names arranged chronographically, per Scene requirements. **Director-Patch®** allows for discriminatory Communications down to each individual or groups, enhancing organization and artistic direction, thus increasing efficiency and reducing mistakes. Unlimited combinations, it is like having multiple private Radios!

**The Director, seen as an artist, can utilize his or her artistic potential quickly and more effectively with controlled Communications, a must for large complex Sets.**

### **Director-Patch®**

Motion Picture Set Communications

626-398-0719 / Fax 626-398-9719

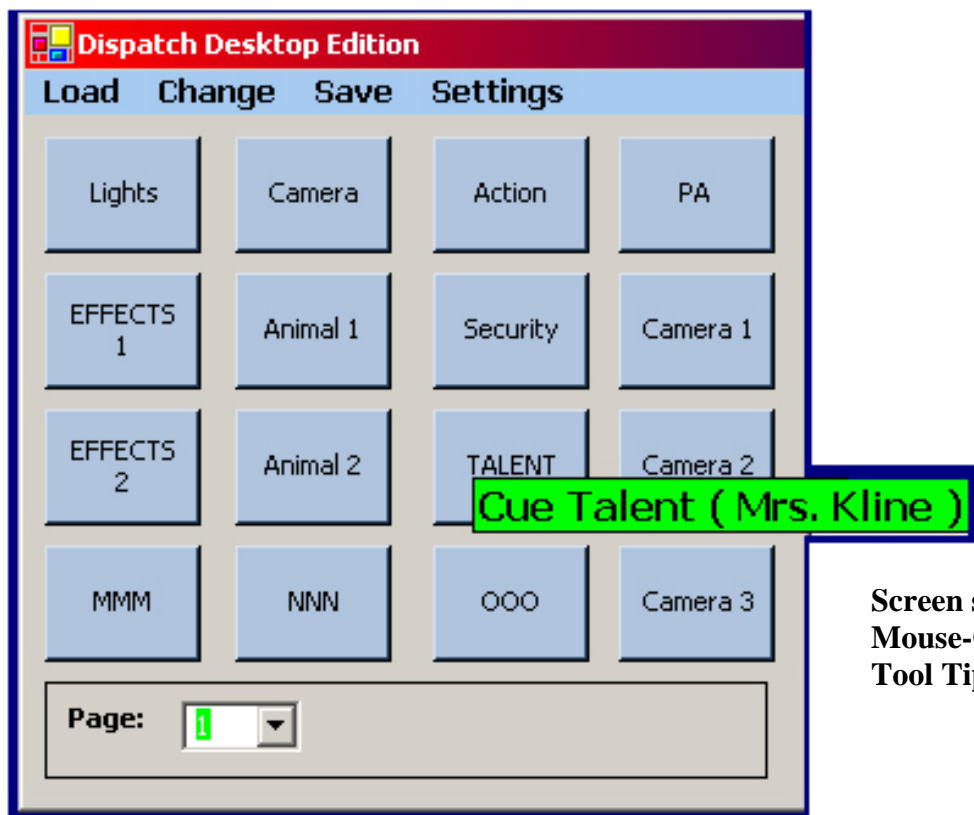
[www.directorpatch.com](http://www.directorpatch.com)

<http://www.directorpatch.com/DP%20Director-Patch.htm>

**For Release 9am PST December 9, 2005 SETCOMM**

Exclusive to SETCOMM “DIRECTOR-PATCH®” is innovative Software driven Communications Tool that will save Motion Picture Production Time and Money. A unique new Tool that will transform a Production Set into a controlled, smoothly flowing, sequentially orchestrated, choreographed movement at the touch of a Button! Revolutionizing Set Communications.

Below is a Screen shot of the Director-Patch® Program showing a Mouse-Over Tool Tip indicating details about a particular Button. All details and Button assignments are easily edited and / or loaded based on a Scene or Location.

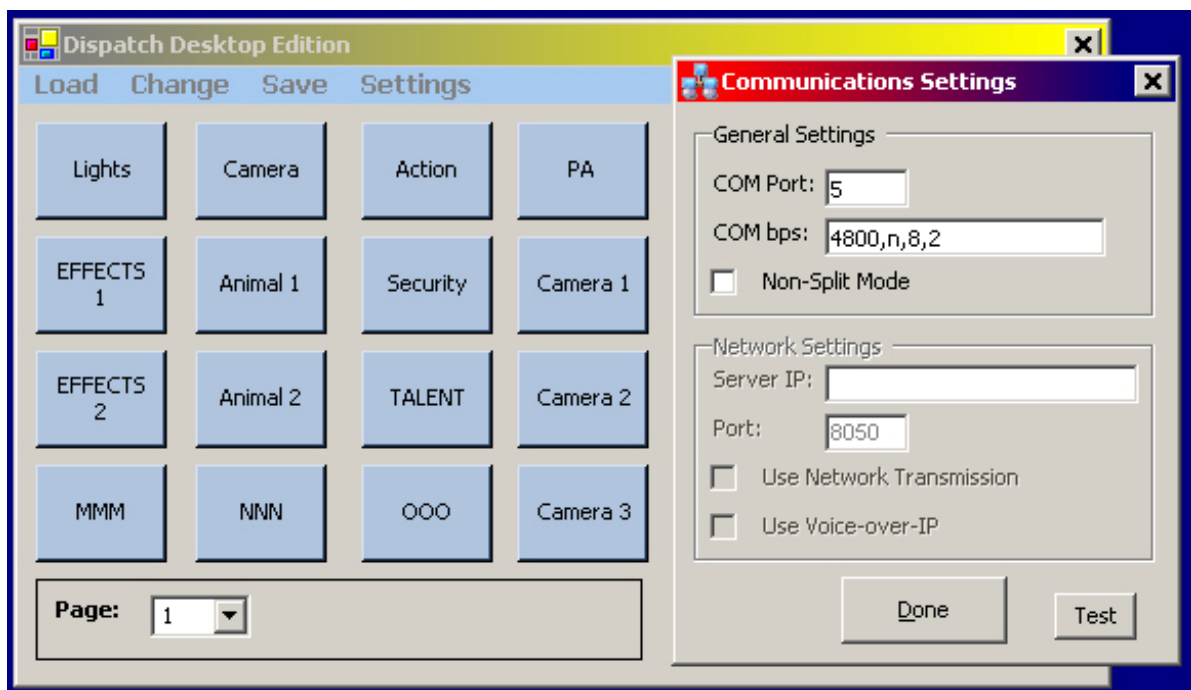


Screen shot with  
Mouse-Over  
Tool Tip

Director-Patch® Button data is stored as a file on a computer, and can be organized by Scene's chronographically, according to a Screenplay or script for easy deployment on Set or Location. Files can also be created and / or edited and sent through Email.

**DIRECTOR-PATCH® can be controlled remotely from another Computer connected to the internet utilizing VoIP ( Voice over the Internet)This will allow for dispatching of Personnel from another location, providing links for wide area coverage.**

**Existing Radio Equipment, Systems, Networks, and Frequencies need not be changed.**



**Director-Patch® Software can allow any computer with a Microphone to connect and operate the Two Way Radio System over the Internet. A Director could call out Commands from another Location, or patch in a conference call from a Telephone.**

**Director-Patch® works with Windows based Programs, like Skype, Net Meeting, and other Messenger types of IP Phones.**

**Time is very expensive, film measured in feet, editing time, hourly rates for equipment and personnel, and the list is long. "DIRECTOR-PATCH®" allows for precise control of everyone, and everything, dramatically reducing errors, and improving efficiency, resulting in a reduction of "takes" per scene. The Director, seen as an artist, can utilize his or her artistic potential quickly and more effectively with controlled Communications, a must for large complex Sets.**

**Instant visual push button control over the entire Production Set, Utilizing pre-loaded communications schemes according to script.**

**Imagine a large complex Production, like Peter Jackson's "Lord of the Rings" without organization!**



**Below is a true Story:**

Two Way Radio is an important and useful tool for Directors and Assistants during an event or a Production, but it can become a problem.

I was working on Set during take number one million, it seemed, when I noticed the Director was becoming annoyed while using his Two Way Radio. The problem was; two Grips named Jimmy kept responding at the same time over the Radio, in confusion they were missing their "cues". A fellow by the name of Joe, whom was not responding to the repeated calls for him over the Radio. I then looked over as the Director was hurriedly searching through Radios channels, shouting obscenities, looking very frustrated trying to find this guy named Joe, I thought to myself."wow!..What a chaotic, waste of time! "... "There must be a solution".... Then I heard it... "CRASH!!".... Sliding past my boot was a piece of the now Destroyed Radio, that met its fate with anger and velocity of meeting the production floor!

**“By simply pressing a named button  
You can talk to any one person  
Privately  
Alternatively, you can choose to talk to  
Certain groups only.  
Unlimited combinations!  
It is like having multiple Radios!”**



**Scene from Tim Burtons “Planet of the Apes”**

For more information, visit our Web site at <http://www.directorpatch.com>

For or a Demonstration, contact:

SETCOMM

Tony Secilia

626-398 0719

626 398 9719 Fax

[demo@directorpatch.com](mailto:demo@directorpatch.com)

<http://www.directorpatch.com/NEWFORM.htm>

# Motion Picture Set Communications

*"EVERYTHING THAT IS ANYTHING COMMUNICATIONS"*

## Director-Patch®

**Two Way Radio Communication organization,  
At the touch of a Button!**

