

SETCOMM
173 Wapello Street
Altadena, CA 91001
(626) 398-0719
(626) 398-9719 Fax
www.directorpatch.com

Contact: **Tony Secilia**
tony@directorpatch.com
(626) 483-9619
(626) 398-9719 Fax
Disaster-Patch

Press Release

SETCOMM's Software Driven Radio Communications Tool: "Disaster-Patch®" A unique field deployable Two Way Radio Dispatch Command Center and Interoperability Tool for Emergency Communications.

Two Way Radio Communication organization made simple by uploading a pre-configured communications scenario based on planned department data for a given area or possible event. Disaster-Patch® instantly enhances Emergency Communications Command Centers with pre-loaded frequencies, tones, and multiple agencies Department information, such as names, descriptions, location, and real-time status are easily loaded/edited into Push-to-talk Buttons offering a very efficient organized method Radio Control during a large-scale event.

Pasadena, Ca. December 7, 2005: SETCOMM of Pasadena, California develops Software Driven Communications Tools for Two Way Radio. These Tools offer a visual, named, multiple push-button displays of Personnel, and Departments, organized by a pre-planned scheme based on disaster scenarios and collaboration of information gathered from Department members and Disaster Drill Data. During an event, Disaster-Patch® software provides organization and dispatch control of a Radio Traffic eliminating pile-ups and allowing for precision Transmissions and Reception. Unlimited combinations of Communication Schemes, it is like having multiple private Radios! Disaster-Patch® Software operates from a Portable or Hand Held PC, and can be operated over the internet utilizing VoIP. Frequency Data is easily modified, saved, loaded, and/or emailed to activate a portable Command center.

Disaster-Patch®

<http://www.directorpatch.com/>

[http://www.directorpatch.com/DP Disaster-Patch.htm](http://www.directorpatch.com/DP%20Disaster-Patch.htm)

Exclusive to SETCOMM “Disaster-Patch®” is innovative Software driven Communications Tool designed for simplicity and reliability, and most importantly... Stability. “Disaster-Patch®” Software design team has researched and questioned many Departments and Personnel regarding various "Portable Dispatch Systems", hardware and software types, we found what was really needed is a non-complex, easy to use, basic system that can be set up in the field quickly requiring minimal hardware and wiring.

SETCOMM has created just that...“Disaster-Patch®” is loud and clearly the most basic, non-complex and cost effective Radio Dispatch system on the market today!

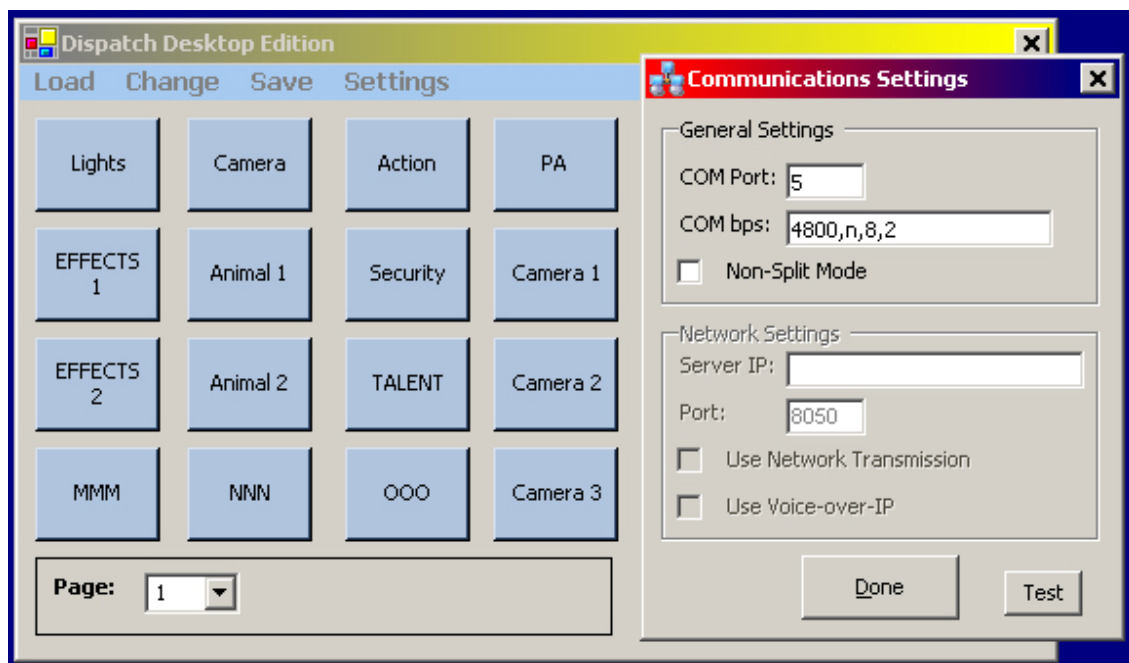


Disaster-Patch® Button data is stored as a file on a computer, and can be organized by geographic location, according to data collaborated from practice Disaster drills and City / County officials.

SETCOMM works with agencies to acquire the various frequencies, tones, and appropriate department identification numbers ETC. upon collecting all the data required, or per possible scenario's, **SETCOMM** will save Data to a file that can be Email and easily loaded into the software. The software automatically loads the Push Buttons with the pre-configured data, and within seconds, you will be ready to start transmitting and receiving.

Our Simple Push-Button interface allows for instant access to multiple Pre-Programmed Radio Channels,(Ten Pages of Sixteen Buttons).just mouse over, click-and-hold to transmit, release for receive(Half / Full Duplex)

Our System is cost effective, simple, and can deploy quickly and easily during a major event or the inevitable Disaster. **SETCOMM** offers a basic system that **gets the job done!** Simply, solidly, in addition, **Disaster-Patch®** adds organization for Command Center Communications.



- No proprietary hardware, large switch boxes, or AC power needed.
- Multiple Radio Support, Motorola, Icom, Vertex/Standard, Kenwood (Radios that support CAT control)
- Full Duplex Audio VoIP (no hardware needed; though support for Avaya, Vonage, and other hardware type VoIP Systems can be configured upon request.
- Existing Radio Equipment, Systems, Networks, and Frequencies need not be changed.
- Interoperability across Networks: Many Agencies and Communities can create interoperable "Patch" configurations with neighboring Agencies or Communities.
- Maintains complete independence between Departments.
- Access and Control by LAN, WAN, VPN, Static IP

<http://www.directorpatch.com/DPIInstructionsLAPTOP.htm>

Disaster-Patch®

Navigation

- [Disaster-Patch Web Page](#)
- [Media Downloads](#)
- [Instructions](#)
- [Demo Software](#)
- [Power Point Presentation](#)
- [Contact](#)
- [Schedule live Demo](#)

- [Vertex/Standard](#)
- [Bendix/King](#)
- [Motorola](#)
- [Frequency Chart](#)
- [Frequencies](#)
- [Video Security](#)
- [Services](#)



SETCOMM

(626) 398-0719

(626) 398-9719 Fax

info@directorpatch.com

Download Free Demo

